

Fuel Moto

2007-2008 Harley Davidson Softail Models Installation Instructions

Parts List

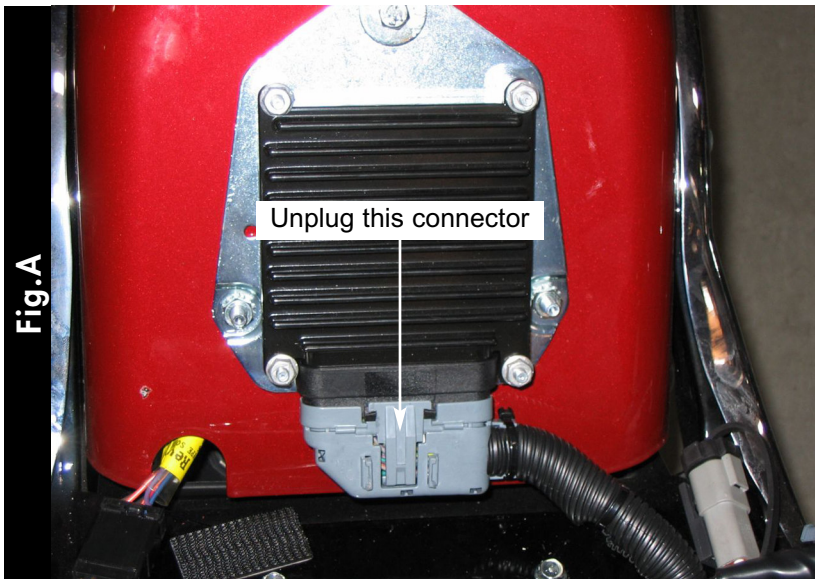
- 1 EFI Tuner
- 1 USB Cable
- 1 CD-ROM
- 1 Installation Guide
- 1 Power Adapter
- 2 Velcro Strip
- 1 Alcohol Swab
- 2 O2 eliminators
- 2 Zip ties



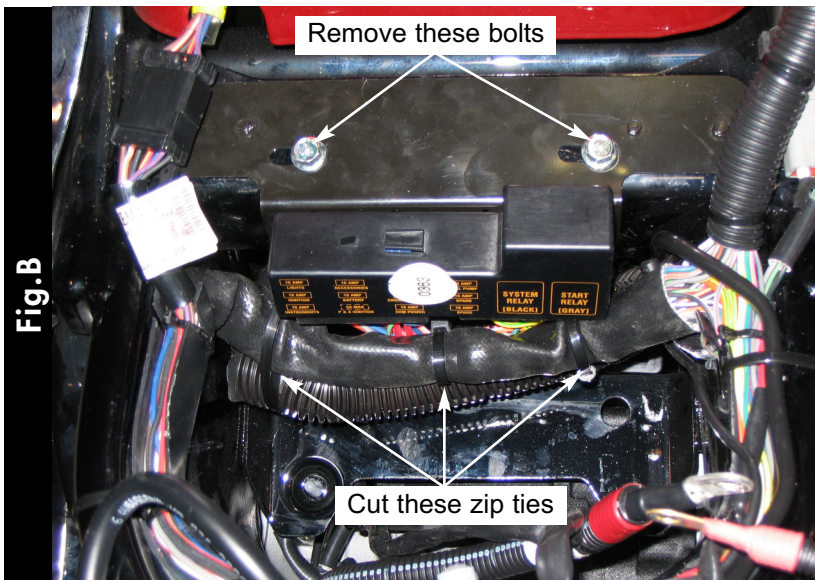
The ignition MUST be turned OFF before installation!

You can also download the Power Commander software and latest maps from the Dynojet® web site at:
www.powercommander.com

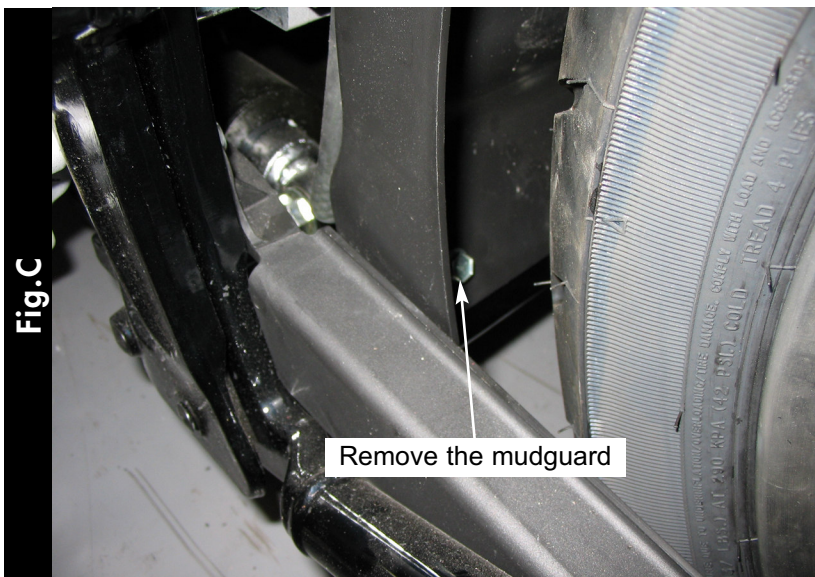
PLEASE READ ALL DIRECTIONS BEFORE STARTING INSTALLATION



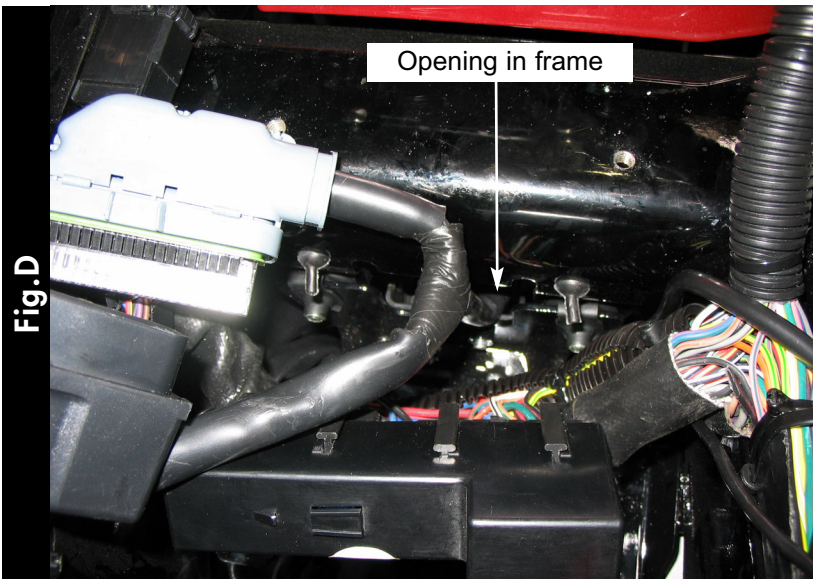
- 1 Remove the seat.
- 2 Remove the battery (negative side first).
- 3 Disconnect the wiring harness from the ECM (Fig. A).



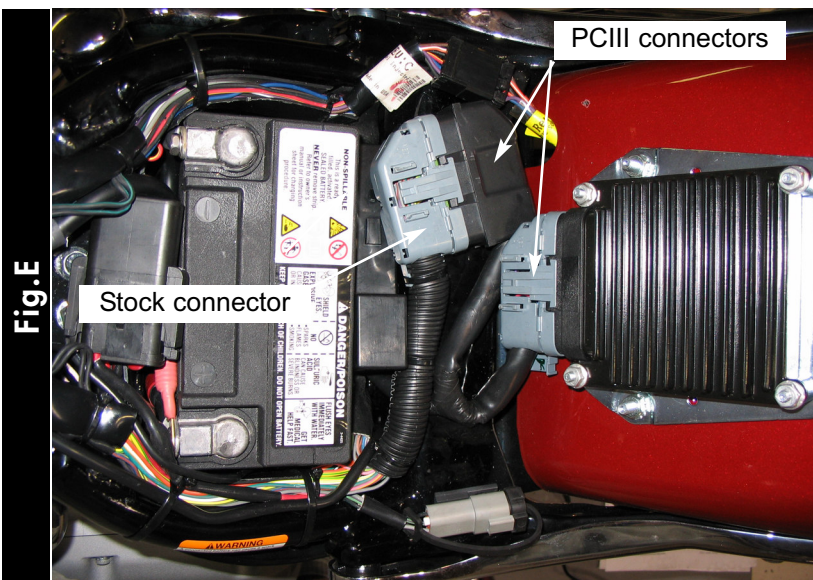
- 4 Remove the two bolts that hold the relay bracket to the frame (Fig. B).
- 5 Cut the 3 zip ties that hold the harness to the relay bracket (Fig. B).
- 6 Remove the relay bracket. This part will *NOT* be reused.



- 7 From the left side of the bike remove the two bolts that hold the mudguard in place.
- 8 Remove the mudguard (Fig.C).



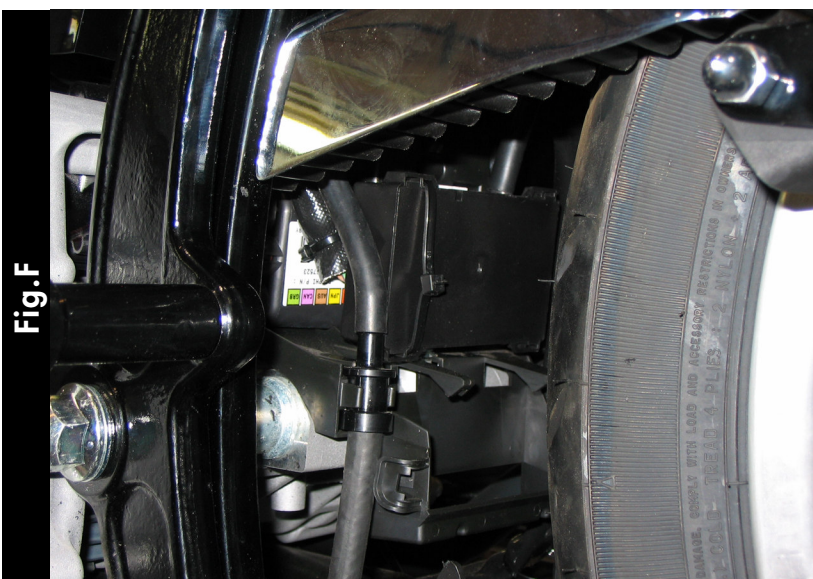
- 9 Route the PCIII connectors from the bottom of the bike into the battery tray area through the hole in the rear (Fig. D).



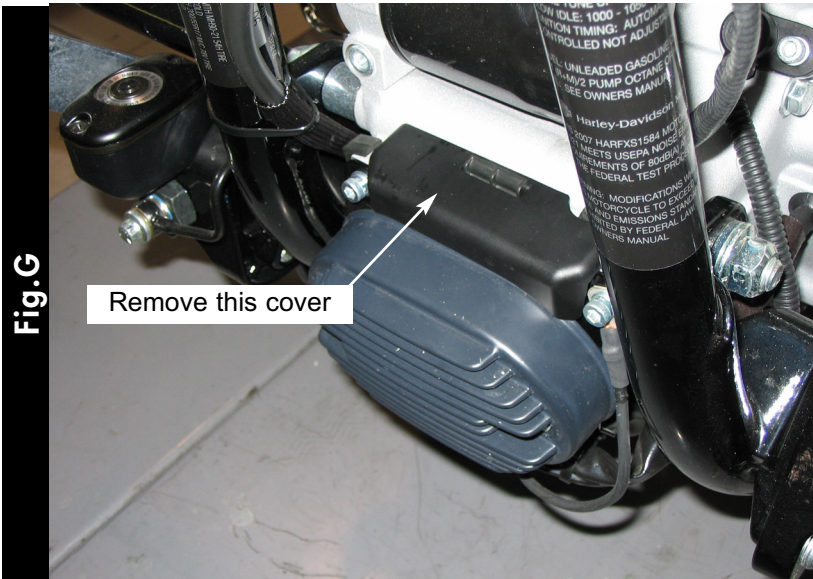
- 10 Plug the grey PCIII connector into the ECM and the black PCIII connector into the stock wiring harness (Fig. E).

Note: It is recommended to use dielectric grease on these connections.

- 11 Push the stock wiring harness and relays down between the frame and battery.
- 12 Attach the connectors to the top of the frame using the supplied velcro (Fig. E).



- 13 Install the PCIII on top of the alarm (Fig.F). Use the supplied zip ties to hold into place. Make sure the PCIII is not going to interfere with the swingarm movement or drive belt.
- 14 Reinstall the mudguard

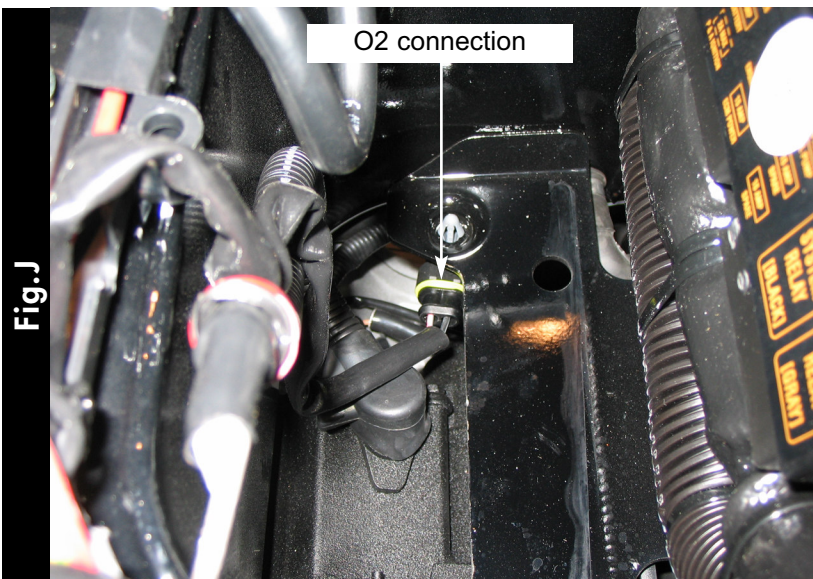


- 15 Remove the cosmetic cover on the front of the engine (Fig.G)



- 16 Disconnect the front O2 sensor from the main wiring harness (Fig. H).
 17 Connect one of the Dyojet O2 eliminators to the stock wiring harness.

Note: The O2 sensor can be removed from the exhaust if desired.



- 18 Disconnect the rear cylinder O2 sensor from the main wiring harness (Fig. J).
 19 Connect one of the Dyojet O2 eliminators to the stock wiring harness.

Note: The O2 sensor can be removed from the exhaust if desired.

- 20 Reinstall the battery and seat.